

DOOSAN

Wheel Loaders |
General Purpose Buckets



2.0 m³ to 6.7 m³
DL200-5 – DL580-5

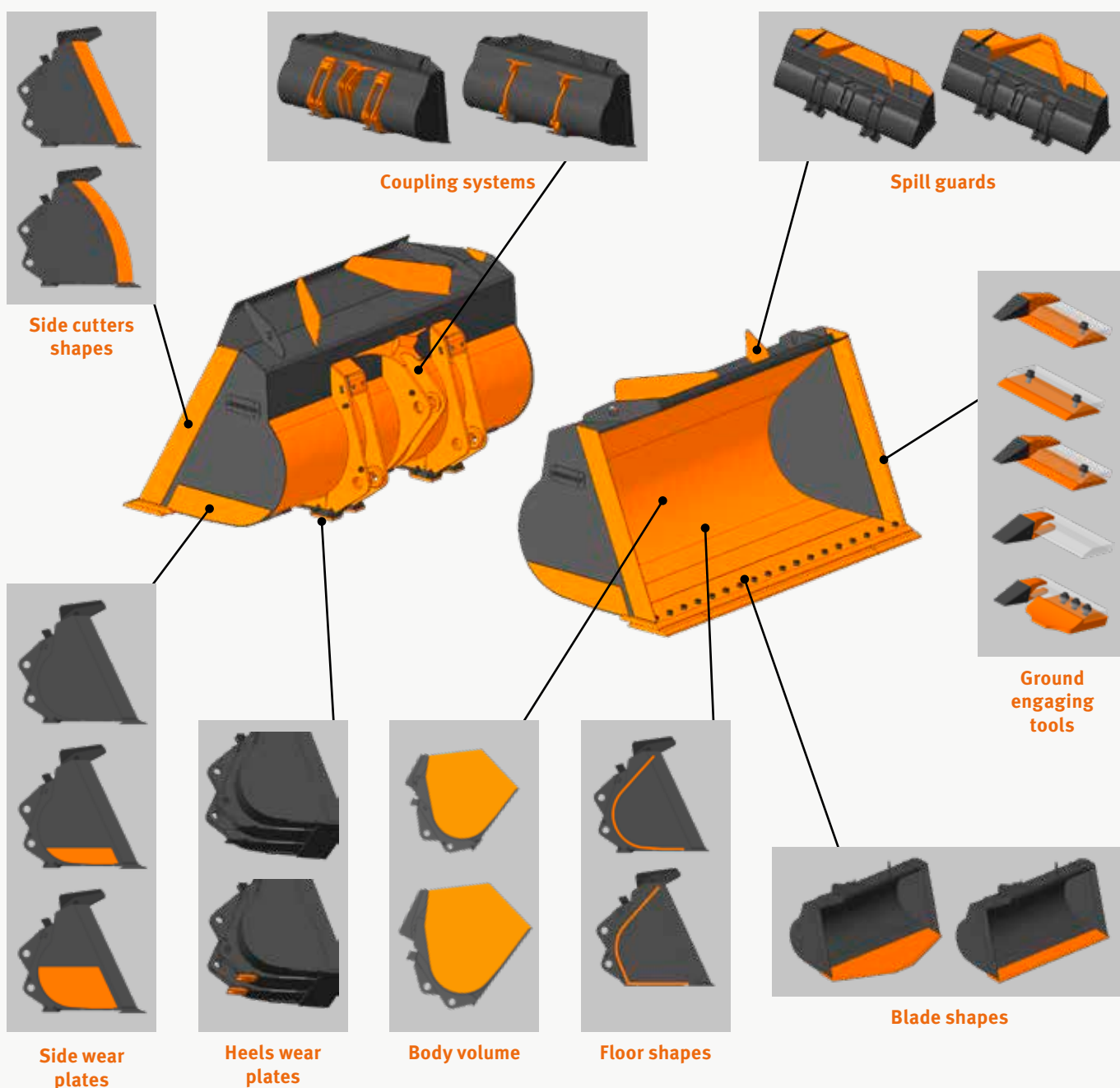


Make sure it fits your application

▣ Configurable general purpose buckets

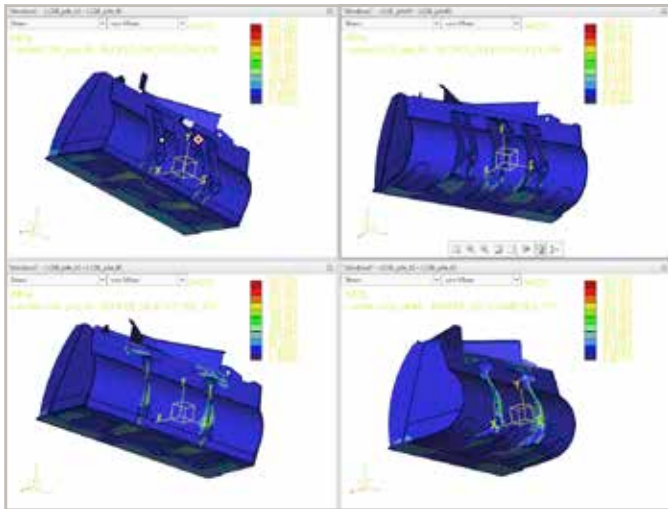
The Doosan range of configurable general purpose buckets offers you the possibility to configure the bucket that matches your application perfectly.

Now, in addition to deciding about teeth or bolt-on edge, you choose the coupling system, floor shape, spillguard type, bucket protection, and blade shape - all according to your needs!



Your Doosan dealer will help you configure it for your application - so that you maximize your productivity, and get the level of protection you need.

Durability & functionality in mind



Robust and wear resistant

A bucket is an investment, so our models are designed to last long:

- To improve durability, all the parts in contact with the ground or the material handled are made of wear-resistant hardox steel.
- Wear parts protect the structure of your bucket. You can select the level of protection required for your application. This way, you're sure you invest in what you need, and nothing more.
- Whatever version you choose, the bucket structure is without stress risers, and will last a long time.

Improved productivity

This new range gives you access to buckets with higher capacities on the Doosan Wheel Loaders - so you have more possibilities to optimize the bucket size for the density of your material.

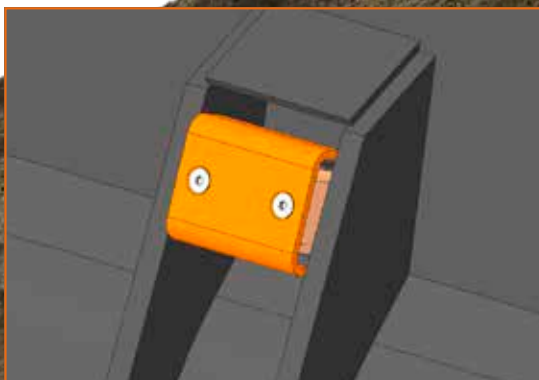


Optimized for your machine

A genuine Doosan bucket is the best fit for a Doosan Wheel Loader: Your bucket and your wheel loader are a single machine, not separate entities.

Kinematics, breakout force, capacity, material retention, operator vision - our engineers optimize the bucket's performance in every aspect to maximize your productivity.

A Doosan bucket ensures that your bucket fits and works perfectly on your machine.



Shock absorbers for more comfort

Your bucket will be equipped with our new shock absorbers. Two years of successful tests convinced us to implement this innovation.

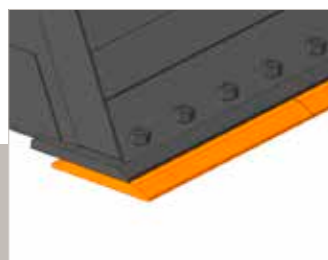
The stoppers are now mounted on a durable rubber pad, which reduces the shocks and noises when rolling the bucket back. This increases the operator's comfort, and reduces stresses on both the machine and the bucket structures.

▣ Bucket range

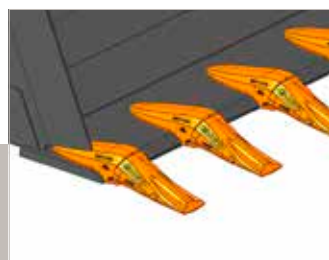
The table below provides you with an overview of our range of general purpose buckets. For different sizes and configurations, please contact your local Doosan dealer.

| Model | Width | Rehandling configurations (bolt-on edge) | | General purpose configurations (teeth) | |
|---------------------|---------|--|--------------------|--|--------------------|
| | | Straight side cutter | Convex side cutter | Straight side cutter | Convex side cutter |
| DL200-5 / DL200TC-5 | 2550 mm | 2.1 m ³ | 2.3 m ³ | 2.0 m ³ | 2.2 m ³ |
| DL220-5 | 2550 mm | 2.3 m ³ | 2.5 m ³ | 2.2 m ³ | 2.4 m ³ |
| DL220-5 | 2550 mm | 2.4 m ³ | 2.6 m ³ | 2.3 m ³ | 2.5 m ³ |
| DL250-5 / DL250TC-5 | 2550 mm | 2.5 m ³ | 2.7 m ³ | 2.4 m ³ | 2.6 m ³ |
| DL250-5 / DL250TC-5 | 2750 mm | 2.5 m ³ | 2.7 m ³ | 2.4 m ³ | 2.6 m ³ |
| DL250-5 / DL250TC-5 | 2750 mm | 2.7 m ³ | 2.9 m ³ | 2.6 m ³ | 2.8 m ³ |
| DL280-5 | 2550 mm | 2.9 m ³ | 3.1 m ³ | 2.8 m ³ | 3.0 m ³ |
| DL280-5 | 2750 mm | 2.8 m ³ | 3.0 m ³ | 2.7 m ³ | 2.9 m ³ |
| DL280-5 | 2750 mm | 3.0 m ³ | 3.2 m ³ | 2.9 m ³ | 3.1 m ³ |
| DL300-5 | 2900 mm | 3.3 m ³ | 3.6 m ³ | 3.2 m ³ | 3.5 m ³ |
| DL300-5 | 2900 mm | 3.5 m ³ | 3.8 m ³ | 3.4 m ³ | 3.7 m ³ |
| DL350-5 | 2900 mm | 3.8 m ³ | 4.1 m ³ | 3.7 m ³ | 4.0 m ³ |
| DL350-5 | 2900 mm | 4.0 m ³ | 4.3 m ³ | 3.9 m ³ | 4.2 m ³ |
| DL420-5 | 2995 mm | 4.3 m ³ | 4.6 m ³ | 4.2 m ³ | 4.5 m ³ |
| DL420-5 | 3200 mm | 4.5 m ³ | 4.9 m ³ | 4.4 m ³ | 4.8 m ³ |
| DL450-5 | 3300 mm | 4.6 m ³ | 5.0 m ³ | 4.5 m ³ | 4.9 m ³ |
| DL450-5 | 3300 mm | 4.9 m ³ | 5.3 m ³ | 4.8 m ³ | 5.2 m ³ |
| DL550-5 | 3400 mm | 5.7 m ³ | 6.2 m ³ | 5.5 m ³ | 5.9 m ³ |
| DL550-5 | 3400 mm | 5.9 m ³ | 6.4 m ³ | 5.7 m ³ | 6.2 m ³ |
| DL580-5 | 3400 mm | 5.9 m ³ | 6.4 m ³ | 5.7 m ³ | 6.2 m ³ |
| DL580-5 | 3400 mm | 6.2 m ³ | 6.7 m ³ | 6.0 m ³ | 6.5 m ³ |

All capacities in accordance with ISO 7546, with straight blade



Bolt-on edge



Teeth



Straight side cutter



Convex side cutter

