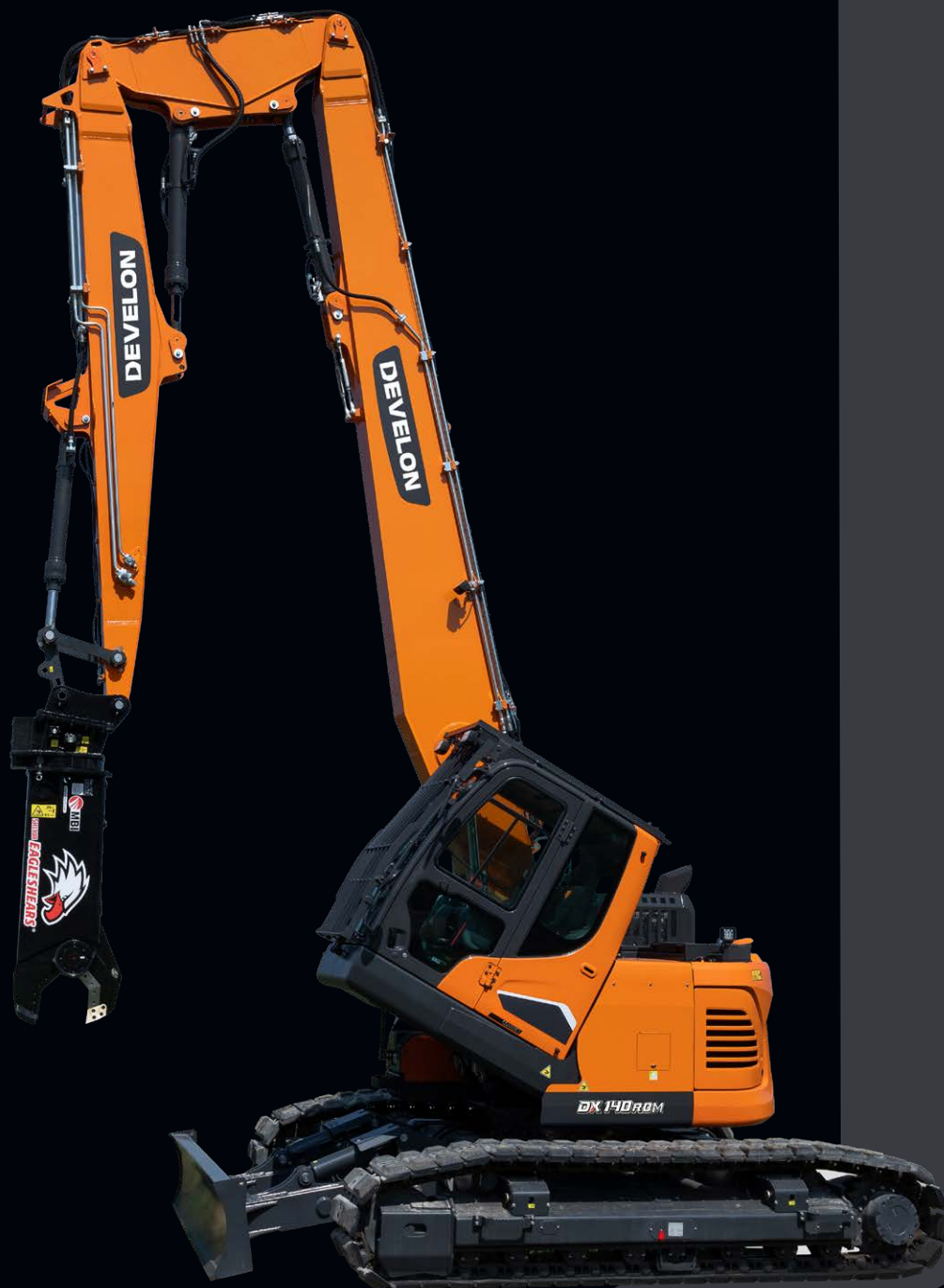


Demolition Excavators

DX140RDM-7

Maximum power	115 hp
Operating weight	22,5 - 23,1t
Max. tool weight	1450 kg
Max. height at pin	16 m



DEVELON

DEVELON

**Continuous evolution,
for better.**

We trace our roots to 1937 as one of Korea's first large-scale machine plants. During that time, we have consistently delivered earth-moving equipment to build critical infrastructure for the betterment of communities, societies and the wider world.

**We are
Develon.**

Develon is a bold name that reflects our core ambition to continue developing onwards and leaving behind a positive footprint in our world. Moving forward, we will continue providing innovative products and solutions that advance the world we live in today.



From demolition to reinvention

Safety

Rear and side cameras and large side mirrors, powerful lighting, & anti-slip steps and platforms. Guard rails on upper structure. FOGS (Falling Object Guard Structure) cab with top and front cab guards (ISO 10262). Main protection for HRD boom piping are provided as standard.

Tilting Cab

The 30° tilting cab provides better visibility and comfort and reduces fatigue during high elevation demolition work.

Stability safety System

The tipping limit is calculated according to the attached tool. The system warns with alarm when approaching the safety limit, and stops the movement of cylinders when the limit is reached. Hydraulic movement limitation can be disabled (where allowed by local regulations).

Boom Joint System

DX140RDM-7 can be equipped with either monolithic boom or modular boom design. Hydraulic lock mechanism provide customers with a complete, flexible solution that allows them to use the same excavator for applications on-site in addition to demolition.

360° All-around view camera (AVM) system

The 360° All-around view camera (AVM) system gives you full view of the machine's surroundings.

Comfort

One of the most spacious cabs in the market, with low noise & vibration levels and excellent all-round visibility. Fully adjustable heated air suspension seat, air conditioning with climate control.

Advanced filtration

Highest efficiency filters & cleaners remove water, dust & particles to protect your investment optimally.

Hydraulically Adjustable Track

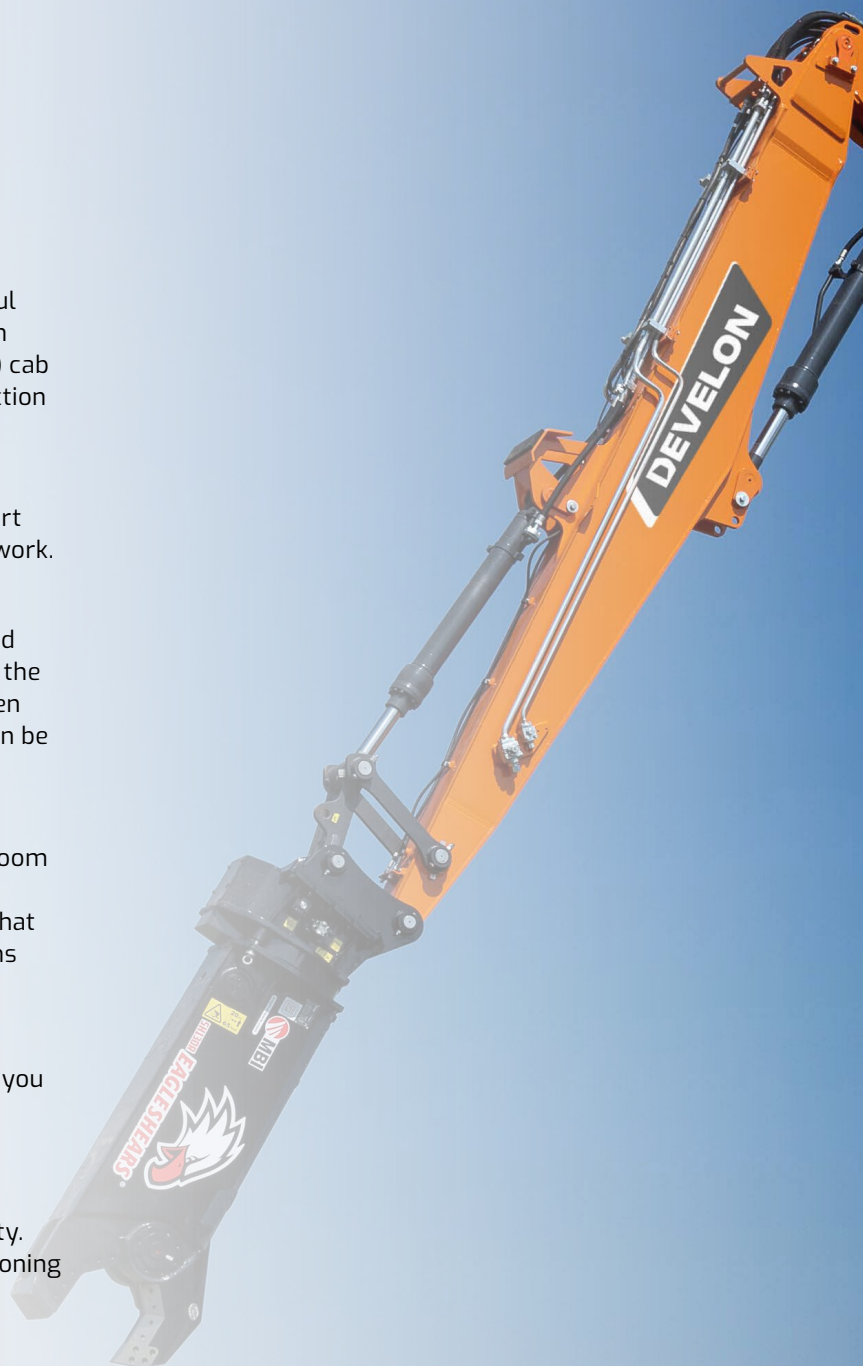
Retractable undercarriage allows keeping compact outline of the machine for transportation while offering unparalleled stability on jobsite.

Controllability

Exclusive jog shuttle button, 4 work & 4 power modes, proportional control, user-friendly Develon Smart Touch screen 8" which integrates all functions and settings of your machine in one place.

Additional counterweight

By adding an 800 kg extra counterweight, DX140RDM-7 is able to safely operate in demanding demolition tasks without compromising maneuverability or safety.





DEVELON

DX140R0M



**Compact design
immense strength**



Ideal for urban environment

Compact design with reduced tail swing in demolition excavators offers several key advantages. Firstly, it enhances maneuverability in confined spaces, allowing operators to work efficiently in urban environments or tight construction sites without risking collisions with nearby structures.

Safe and effective

Reduced tail swing minimizes the machine's footprint, improving safety for workers on the ground by reducing the likelihood of accidental contact. This design also allows for more precise control during demolition, enhancing productivity and ensuring the demolition process is both safe and efficient.

Transportation made easy

Compact design also offers significant advantages for transportation. DX140RDM-7 is easier to transport due to its smaller size and lighter weight, which can reduce transportation costs and simplify logistics. They can be loaded onto standard trailers without requiring special permits or escorts, saving time and money. Furthermore, the reduced size allows for easier access to sites with limited entry points, ensuring the excavator can be deployed quickly and efficiently to various job locations.

Keeping demolition works safe

Develon demolition excavators are powerful designed for power for 2 main reasons: the power to tear down the toughest structures, and the stability to keep the operator completely safe.

Tilting cab

Thanks to the tilting cab, the operator can maintain a comfortable posture and experience less fatigue during demolition work. Safety valves are located in the cab and behind it. In case of an emergency, the cab can be lowered by the operator or from outside the cab.

Your safety is our priority

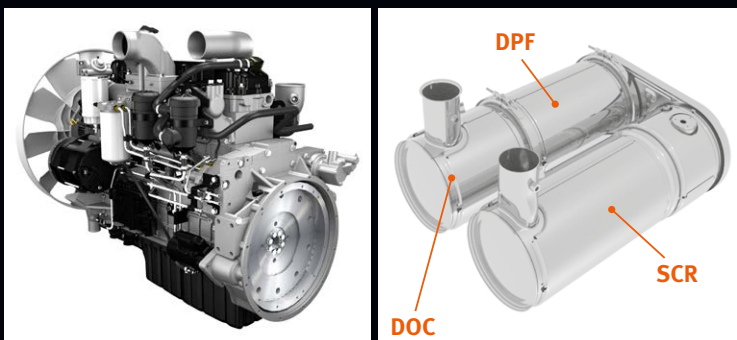
- FOGS: Protects the operator from falling or flying objects
- Rear and side view camera
- All round view monitor 360° for maximum safety in narrow environments
- Boom piping protection against falling debris are standard

Hydraulically adjustable track (extended track)

- Best stress distribution and durability thanks to the circular shape and self lubricated system.
- Squared base for best working diagram at 360°.

Stability warning system

4 angle sensors and 1 pressure sensor calculate in real time the machine relative position with its tipping limit weight, even if working tool is changed and warns the operator safety by monitoring the exact position of the machine and the work tool. The system warns the operator when the safety limit is being approached; and the system stops the machine's operation when the limit is reached. Thanks to safety key behind the seat operator can disactivate the hydraulic block.





**Work excellence,
ultimate safety**



Master in demolition, partner in comfort

1. Anti tipping system
2. FOGS
3. Large sun roof
4. Improved visibility on the bottom right
5. Joysticks and switches integrated in adjustable control consoles
6. Separate seat height adjustment lever and cushion tilting function
7. Pedal for auxiliary control 1 & 2 ways, rotation line and drainage line
8. Straight ergonomic pedals



Best-in-class operator environment

The DX140RDM-7 is designed to provide you with the best possible working conditions. The sophisticated state-of-the-art ROPS cab is pressurized and ISO-certified for your safety. A high-quality heated seat (and even seat cooling available as an option) with air suspension provides maximum operator comfort.

Unrivalled comfort

Comfortably seated, you benefit from a clear all-round view of the work site and have easy access to several storage compartments. Pedals, joysticks and armrests have all been designed for operator comfort and efficiency. Noise and vibration levels are remarkably low, and the effectiveness of the air conditioning and automatic climate control has been increased significantly. These features allow you to continue working for hours on end without feeling tired. Finally, thanks to the hands-free system, you won't miss any important call, and you'll stay available to your customers, as you operate the machine.

Cab suspension

The cab's suspension system (CabSus mount) dampens vibrations and provides outstanding protection against impact. This system absorbs shocks and vibrations much more effectively than a conventional silentblock suspension system.

Develon SMART TOUCH

The wide 8" touchscreen provides easy scrolling through the different menus, including power settings and auxiliary hydraulics settings. It also allows you to connect a Bluetooth device or listen to your favorite radio station.

360° all-around view camera (AVM) system (Option)

The 360° all-around view camera (AVM) system gives you full view of the machine's surroundings.

Develon Fleet Management > Management on
the job site > Work efficiency management >
Preventive management > Proactive service



Monitor your equipment from anywhere

To compete and succeed, your equipment needs to maximize job site productivity and the bottom line. Develon machines do both. To ensure a high return on investment, we add more premium features as standard equipment on every model. Our standard features are often options that other manufacturers only provide at extra cost. By including them as standard, Develon gives you a competitive edge — helping operators work more efficiently and improving safety during long days on the field.

> Telematics terminal

Terminal device is installed and connected to a machine to capture machine data.

> Telecommunication

Develon provides dual-mode (Mobile, Satellite) communication to maximize communication coverage.

> Develon Fleet Management WEB

Users can monitor machine status from Develon Fleet Management Web.

Operation trend

Total operation hours and operation hours by mode.

Fuel efficiency*

Fuel level and fuel consumption

Reports & Location

Operation report & utilization. GPS and geo-fence.

Warning & Alert

Detect machine warnings, antenna disconnection, and geo/time fence

Filter & Oil management

Preventive maintenance by item replacement cycle.

Simple maintenance for maximum uptime

Maintenance access made simple

- Large guard rails are installed along with anti-slip steps and plates, for safer, easier access to the whole upper structure.
- The air conditioning filter is placed on the side of the cab for easy access. The filter's cover can be locked and opened with a key.
- A battery cut-off switch makes it easy to disconnect the battery for long-term storage.
- The hour meter display can be easily checked from ground level.
- Shut-off valves have been fitted on the pre-filter piping line and fuel tank drain piping to make servicing easier and prevent pollution from leakage.
- Engine parts can be easily reached via the top and side panels.
- For extra accessibility and servicing convenience, all filters (engine oil filter, fuel pre-filters, fuel filters and pilot filter) are located in the pump compartment.

- An electric transfer pump for initial priming of fuel filters is featured as standard.
- Fine mesh on the side doors and on the cooler itself filters the intake air going to the cooler for better cooling performance and reduced maintenance.

AdBlue® tank

Connected to the ECU, sensors in the tank detect low levels of AdBlue® or any other system malfunction.

Also equipped with an AdBlue® level indicator during refilling, to avoid over filling

Centralized greasing points

To make maintenance easier, the greasing points have been centralized. An automatic lubrication system is available as an option.

Hydraulically Adjustable track

Retractable undercarriage allows keeping compact transport dimensions, while offering great stability on jobsite. Circular shape of the extensions brings best possible stress distribution and, together with self-lubricating system, considerable durability.

Undercarriage durability

- The chain is composed of sealed, self-lubricating links for long-term dependability.
- The track spring and idler are joined for long-lasting performance and easy maintenance
- Cast steel heavy-duty sprockets guarantee the highest resistance
- The track rollers are lubricated for life
- Road liner shoes equipped as standard are ideal for operation in urban environment.



Arm and Boom configuration

Boom Solutions Designed for Your Project

Develon DX140RDM-7 offer versatile configuration options for booms to suit different project needs. Basic choice is the monolithic boom configuration, where the excavator is solely equipped with a dedicated demolition boom bringing great performance, easy operation and lower cost. Alternatively, the interchangeable boom configuration provides greater flexibility by allowing operators to swap between various boom types. Options include the high-reach demolition boom, ideal for reaching tall structures effectively; the long-reach boom without articulation, and the standard digging arm for traditional excavation tasks. This versatility empowers operators to adapt quickly to diverse job requirements, enhancing efficiency and productivity on the site.



Monolithic boom



Long reach arm

DEVELON

TECHNICAL SPECIFICATIONS

DX140RDM-7



Engine

Model	Develon G2 D34
No. of cylinders	4
Rated power at 2000 rpm	
SAE J1995	86 kW (115 hp)
SAE J1349	81.6 kW (109 hp)
Max. torque at 1400 rpm	46.9 kgf·m
Idle (low - high)	950 [±10] - 2000 [±25] rpm
Displacement	3409 cm ³
Bore × stroke	98 mm × 113 mm
Starter	24 V / 5 kW
Batteries - Alternator	2 × 12 V, 100 Ah – 24 V, 100 A
Air cleaner	Double element air cleaner

Hydraulics

Main pump	
Type: 2 × variable displacement tandem axial piston pump	
Max. flow rate at 2000 rpm	2 × 114 l/min
Pilot pump: Gear pump	
Max. flow rate at 2000 rpm	30 l/min
Relief valve settings	
Implement	330 kgf/cm ²
Travel	350 kgf/cm ²
Swing	275 kgf/cm ²
Pilot	40 kgf/cm ²

Swing mechanism

Maximum swing speed	10.13 rpm
Maximum swing torque	4888 kgf·m

Drive

Travel speed (low - high)	2.9 - 4.7 km/h
Maximum traction	15.2 t
Maximum gradeability	35° / 70%

Fluid capacities

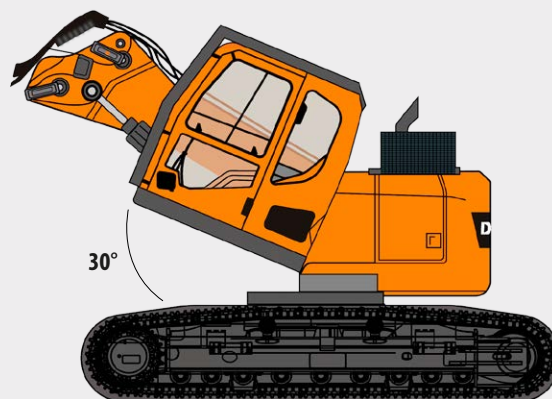
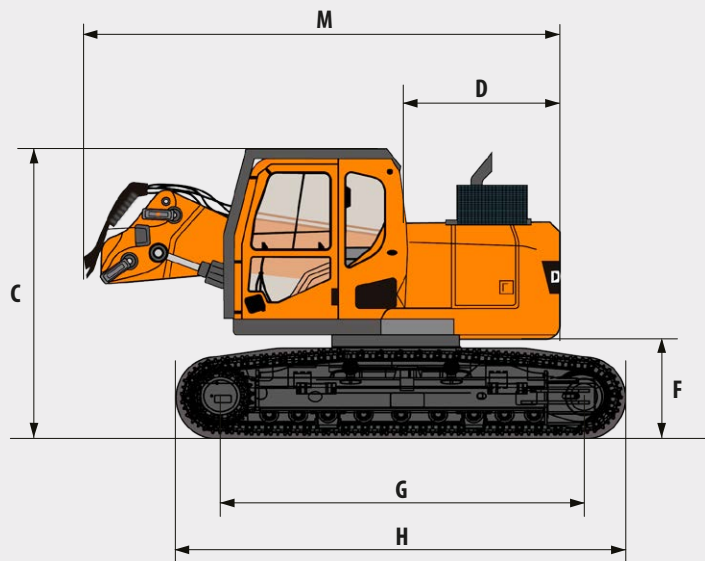
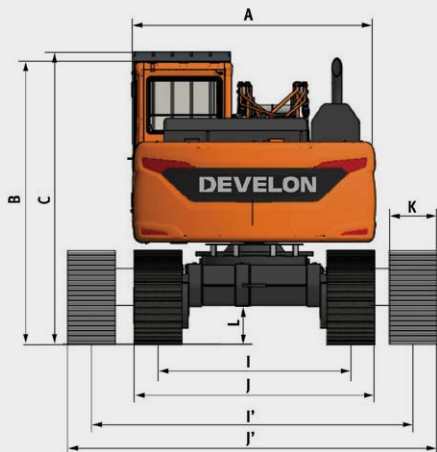
Fuel tank	265 l
Cooling system (radiator)	27.1 l
AdBlue® (DEF) tank	25 l
Hydraulic oil tank	145 l
Engine oil	12.6 l
Swing drive	3 l
Travel device	2 × 2 l

Dimensions

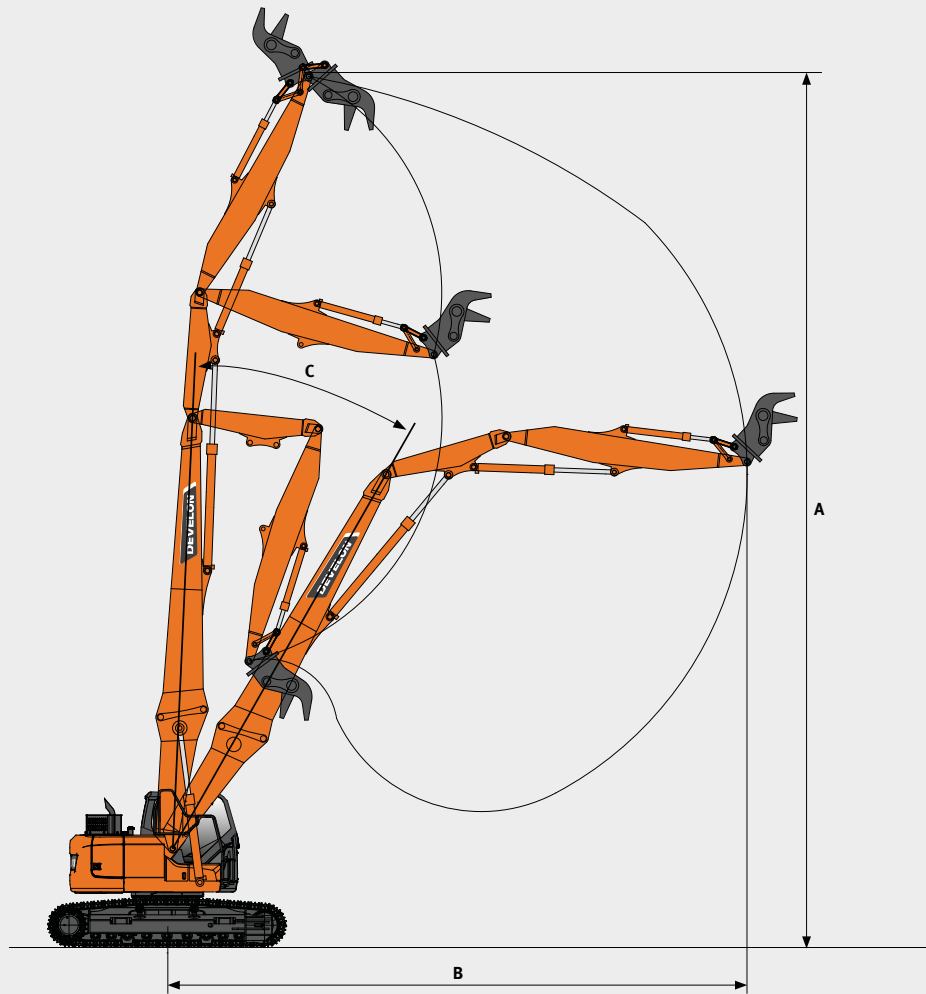
Dimensions & Weight – Base machine		Unit	Monolithic	Interchangeable
A	Width superstructure	mm	2327	2327
B	Overall height	mm	2891	2891
C	Overall height (incl. FOGS)	mm	3020	3020
D	Tail swing radius	mm	1525	1525
F	Minimum counterweight clearance*	mm	940	940
G	Tumbler length	mm	3385	3385
H	Track length (with 2 step extension)	mm	4130	4130
I	Track gauge (retracted)	mm	2040	2040
I'	Track gauge (extended)	mm	3240	3240
J	Track width (retracted)	mm	2540	2540
J'	Track width (extended)	mm	3740	3740
K	Shoe width	mm	500	500
L	Minimum ground clearance*	mm	370	370
M	Overall length (without arm)	mm	N/A	4304
	Base machine weight (without arm)	kg	N/A	19500**
	Tilting Angle (Cabin)	°	30	30

* with roadliner shoes

** without additional counterweight 800 kg



Demolition Configuration (HRD)



Demolition Configuration (HRD)

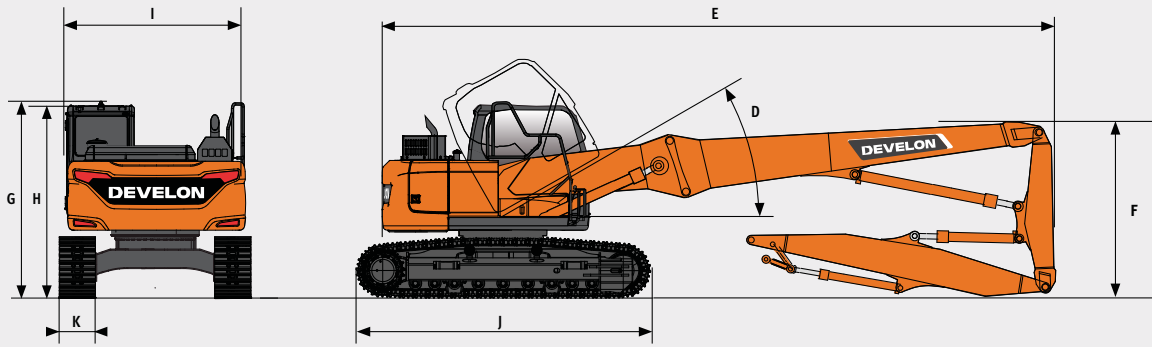
	Unit	Monolithic	Interchangeable
Max tool weight	kg	1450	1250
Variable undercarriage width	mm	2540-3740	2540-3740

Working Range (HRD)

	Unit	Monolithic	Interchangeable
A Maximum height at pin	mm	16000	16000
B Maximum reach at pin*	mm	10700	10000
C Maximum height (2:1 line)	mm	14000	13500

* the maximum reach values refer to 360°

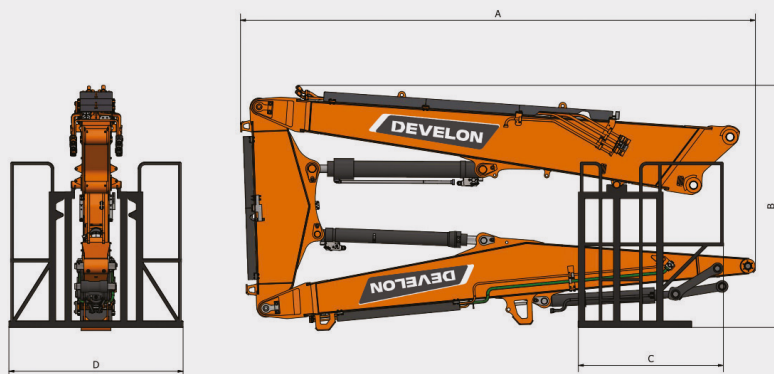
Dimensions



Transport Dimensions & Weights

		Unit	Monolithic	Interchangeable
D	Cab tilting angle	°	30	30
E	Overall length (incl. High Reach Demolition boom)	mm	10500	10529
F	Boom height	mm	2671	2671
G	Maximum height with protection grid (FOGS)	mm	3020	3020
H	Cab height	mm	2891	2891
I	Upper structure width	mm	2590	2590
J	Track length	mm	4130	4130
K	Shoe width	mm	500	500
	Weight (incl. High Reach Demolition Boom)	kg	22500	23100*

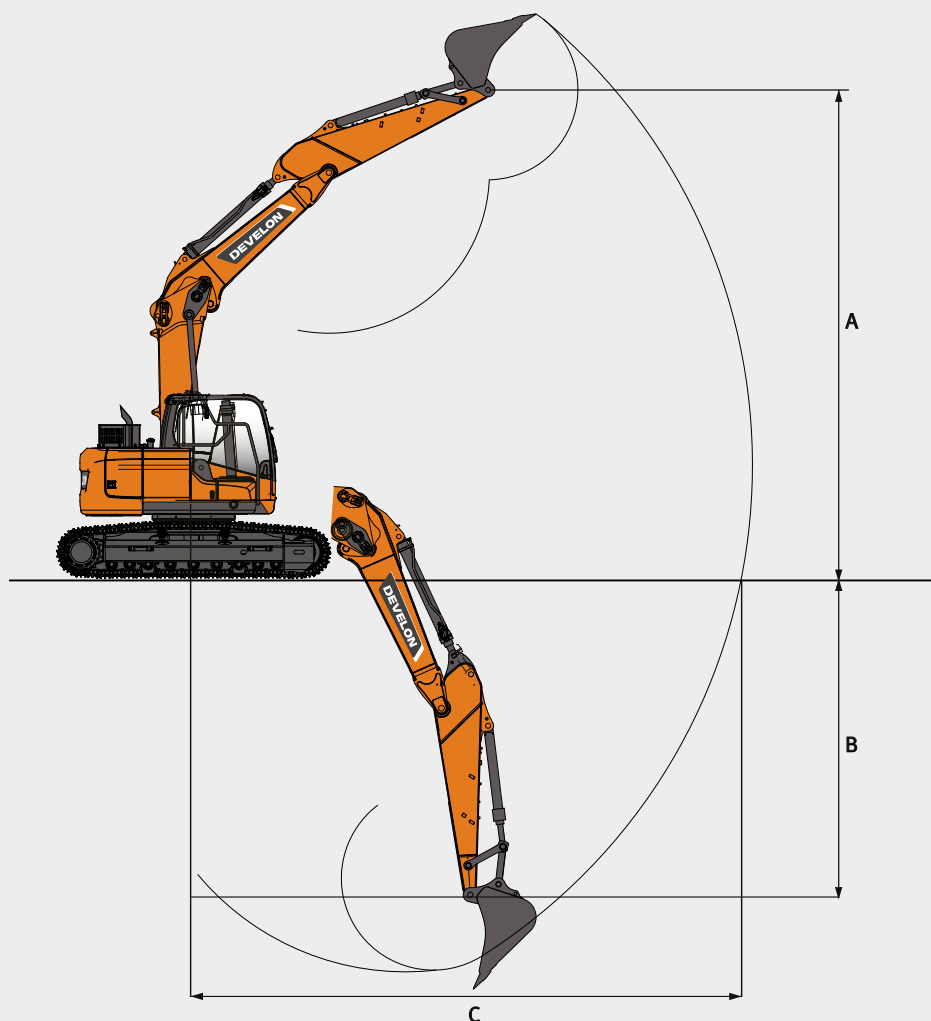
*including additional counterweight 800 kg



Dimensions & Weight – HRD

		Unit	Interchangeable
A	Overall length	mm	6142
B	Overall height	mm	2573
C	Length of storage rack	mm	1800
D	Width of storage rack	mm	1900
	Weight of storage rack	kg	150
	Weight of HRD boom with storage rack	kg	2950

Digging Configuration



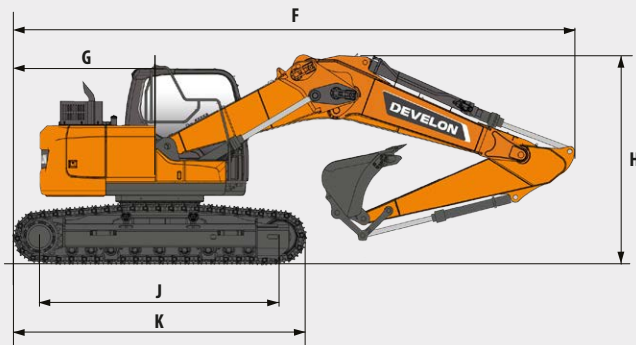
Digging Configuration

	Unit	Interchangeable
Arm length	mm	2500
Maximum bucket capacity	m ³	0.51

Digging Configuration

	Unit	Straight	Bent
A Max. pin height	mm	8000	6100
B Max. pin depth	mm	2400	3500
C Max. pin reach	mm	7600	7000
Max. pin reach at ground level	mm	7400	6800

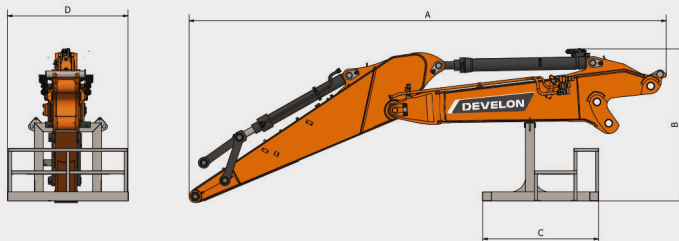
Dimensions



Dimensions & Weight – Base machine

		Unit	Interchangeable
F	Overall length	mm	8279
G	Tail swing radius	mm	1525
H	Boom height	mm	3110
J	Tumbler center distance	mm	3385
K	Track length	mm	4130
	Weight (including digging boom)	kg	22150*

*including additional counterweight 800 kg



Transport Dimensions & Weight – Work equipment

		Unit	Interchangeable
A	Overall length	mm	5531
B	Overall height	mm	2157
C	Length of storage rack	mm	1560
D	Width of storage rack	mm	1622
	Weight of digging boom with storage rack	kg	1926

Standard & Optional equipment

Standard

Develon D34 G2 - Common rail 4 cylinder engine with direct fuel injection and electronic control, 4	•	Loudspeakers and connections for radio	•
Auto-idle function	•	Radio + MP3 (stereo) with Bluetooth	•
Auto shut-off	•	Rear and side view camera	•
No EGR	•	Roll Over Protective Structure (ROPS)	•
Boom and arm flow regeneration	•	Boom and arm cylinder safety valves	•
Fine swing mode, on or off from cab	•	Overload warning device	•
Swing anti-rebound valves	•	Large guard rails on upper structure and steps	•
Spare ports (valve)	•	Rotating beacon	•
One-touch power boost function	•	Punched metal anti-slip plates	•
Double way line high flow + Breaker piping (PE3C)	•	Hydraulic safety lock lever	•
Smart Power Control (SPC3)	•	Safety glass	•
Cylinder cushioning & contamination seals	•	Hammer for emergency escape	•
Pressurized sound-insulated cab	•	Right and left rear-view mirrors	•
Fully adjustable air suspension seat with heater	•	Lockable fuel cap and covers	•
Air conditioning with climate control	•	Battery cut-off switch	•
Pull-up type front window sun roller blind and removable lower front window	•	Engine restart prevention system	•
Sliding left window	•	Emergency engine stop switch and hydraulic pump control switch	•
Intermittent upper and lower windshield wiper	•	Guard rails (ISO 2867:2011)	•
Rain visor	•	Parking brake	•
Rear window defroster switch	•	LED 8 work lights (2 boom lamp, 4 body lamps, 2 additional lamps on cab)	•
Adjustable PPC wrist control levers for arm boom bucket and swing	•	Dozer blade	•
Joysticks & pedal provide proportional control of auxiliary hydraulic lines	•	DEVELON Fleet Management	•
Pedal for auxiliary control 1 & 2 ways	•	Auto shut-off fuel filler pump	•
Jog shuttle switch	•	Double element air cleaner	•
Develon Smart Touch – 8" touch screen, all-in-one	•	Fuel pre-filter with water separator sensor	•
Attachment management system	•	Dust screen for radiator/oil cooler	•
Engine speed (RPM) control dial	•	Self-diagnostic function	•
Automatic travel speed	•	Alternator (24 V 100 A) – Battery (2 × 12 V 100 Ah)	•
4 operating modes & 4 working modes	•	Hydrostatic drive with 2-speed power shift transmission	•
Electric horn	•	Remote greasing for swing circle and work group pivot points	•
Cigarette lighter	•	Falling Objects Guard System – top and front cab guards (ISO 10262 level II and SAE J1356)	•
Ceiling light	•	500 mm rubber shoes (road liner)	•
Cup holder	•	Hydraulic piping low flow for rotating or tilting tool (joystick control)	•
Multiple storage compartments	•	Hydraulic piping for quick-coupler	•
Heating and cooling lunch box	•		
Flat spacious easy-to-clean floor	•		
Develon Smart Key & remote door lock/unlock	•		
Anti-theft protection	•		
12 V spare power socket	•		
Serial communication port for laptop PC interface	•		
Remote radio ON/OFF switch	•		

Optional

500 mm triple grouser shoes	•
Digging arm (only for interchangeable boom)	•
Long reach arm (only for interchangeable boom)	•

*Some of these options may be standard in some markets. Some of these options may not be available for certain markets. Please, check with your local Develon dealer for more information about availability or to adapt your machine to your application needs.

Develon Warranty

Your key to equipment protection and peace on mind

Unlock unparalleled protection for your heavy construction equipment with Develon. Our robust warranties and premium protection plans ensure your investment is safeguarded and adds lasting value.

Tailored warranty plans

Choose from a range of affordable protection plans, designed exclusively for Develon customers through our authorized dealers. These plans turn your machine's price into a strategic investment, not just an expense.

Develon Premium: Premium protection

Opt for Develon Premium to experience unmatched security, reliability, and overall value. This top-tier plan shields your equipment from unexpected costs and minimizes downtime, letting you focus on what matters – getting the job done*.

Act now!

Contact our authorized Develon Dealers today and fortify your equipment investment. With a seamless process and lasting benefits, Develon ensures your heavy construction equipment remains in peak condition.

**Choose Develon Extended Warranty:
Play safe and secure your investments.**

* Only for ADT, HEX and WLO.
Offer may vary based on model.

Powered by Innovation

DEVELON

Space for dealer's stamp



HD Hyundai Infracore Europe s.r.o.
IBC – Pobrežni 620/3,
18600 Praha 8 – Karlín, Czechia

©2024 HD Hyundai Infracore. All rights reserved.

D4601320-EN (02-25)

Certain specification(s) are based on engineering calculations and are not actual measurements. Specification(s) are provided for comparison purposes only and are subject to change without notice. Specification(s) for your individual Develon equipment will vary based on normal variations in design, manufacturing, operating conditions, and other factors. Pictures of Develon units may show other than standard equipment.