

Dozers

DD100

Power: 91.0 kW / 122 HP @ 2 200 rpm
(SAE J 1995, Gross)

LGP version with Ripper: 11 600 kg

DD130

Power: 117 kW / 156.9 HP @ 2 200 rpm
(SAE J 1995, Gross)

LGP version with Ripper: 15 300 kg



DEVELON

DEVELON

Continuous Evolution for the Better

We trace our roots back to 1937 as one of Korea's first large-scale machine plants. Since then, we have consistently delivered earthmoving equipment to build critical infrastructure for the betterment of communities, societies, and the wider world.

**We are
Develon.**

Develon is a bold name that reflects our core ambition to continue developing onwards and to make a positive mark on our world. Moving forward, we will continue providing innovative products and solutions that advance the world we live in today.



Never Stop Pushing for More

The mid-size Develon dozers bring exceptional power to residential and light commercial construction, as well as a range of tasks like forestry, roadwork, parking, platform building, and recycling projects. Built to adapt and excel, they make every job site an example of efficiency and capability.

Superior Visibility

- Stay aware with Develon dozers' sleek narrow front and minimal pillars, plus an all-glass cab for a clear, panoramic view.

Precision and Control

- Tackle tough jobs smarter with standard 2D Dozing Assist and easy 3D upgrades powered by Leica, Trimble, or Topcon.

Comfort on the Go

- A spacious cab, 8-inch touchscreen, rearview camera, and reliable wipers support smooth, safe operation.
- Adjustable air-suspended seats and reduced vibration keep you comfortable all day.

Undercarriage

- A highly durable undercarriage stands up to harsh conditions and lowers maintenance costs, with an exclusive design using dual and single flange rollers.



With a robust engine, a 6-way power tilt angle blade, and a lightweight build, our dozers aren't just strong—they're smart. Standard 2D Dozing Assist keeps your blade perfectly aligned for precise grading, and upgrading to 3D is seamless for even faster, more accurate work. They deliver power where and when you need it, while staying nimble enough for tight spots.

All-around Strength

Our dozers provide the muscle you need to get the job done efficiently.

- The DD130's 204J PERKINS Stage V engine delivers best-in-class power with 117 kW (157 hp) at 2 200 rpm. With a main pump flow of 132 l/min, a travel speed of 9 km/h, and a max traction force of 22 tons.
- Or choose the DD100 with the G2 DM03-LED00 Develon engine—91 kW (122 hp) at 2 200 rpm. With a main pump flow of 103,5 l/min, a travel speed of 9 km/h, and a max traction force of 16 tons.

Tilt, Lift & Angle

Get more power with the 6-way power-tilt angle blade. It lets you lift, tilt, and angle as needed, reducing the number of passes required and helping you move on to the next task quickly and efficiently.

Lightweight Power

Enjoy impressive mobility with our dozers' top class weight. They provide the perfect mix of stability and maneuverability to handle tight spaces and the power to tackle tough jobs.



Smooth and Powerful



Clear and Confident

Count on our dozers' top-notch visibility to keep you safe. The clever design and features ensure you have a clear view of everything around you, making every job that much safer and more secure.

Safety in Sight

Develon dozers keep your view crystal clear with features like an under-the-hood pre-cleaner, a standard rearview camera, a sleek front nose, and all-glass doors.

Ready for the Ride

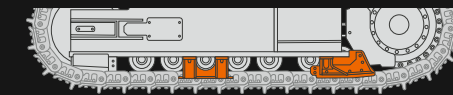
With a seatbelt warning alarm, a rotating beacon to alert others, and an Operator Presence Switch (OPS) that stops the machine when you stand up, you'll handle every job safely and efficiently—all while enjoying the ride.

Work without Worry

When you're operating our dozers, safety is a given. Thanks to ROPS and FOPS standards, you can concentrate on the work, not the risks.

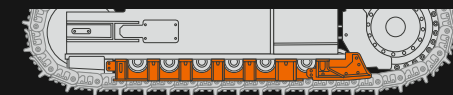
Dependable Dozers

When it comes to productivity and longevity in harsh conditions, our dozers set the standard-with advanced features, a robust undercarriage, and easy maintenance to ensure your dozer performs at its best, day in and day out.



Track guard options

Two track guard options, general-purpose and full guard, offer exceptional performance and uptime protection.



Different track shoe options are also available to help distribute load on the ground to suit site conditions.

- Thinner tracks are best for rugged, rocky environments.
- A low-ground pressure tracks are best for sandy soil conditions.

Unstoppable Performance

Ensure you get consistent performance, no matter the conditions:

- With sealed and lubricated components, plus options for single and dual-flange rollers and track guards, our dozers are designed to keep you and the work rolling smoothly.
- Keep your dozer in top shape with maintenance points accessible from ground level, a tiltable cab, and centralized grease points.
- Key features like a high-efficiency pre-cleaner, smart cooling, and a fine-tuned fuel system are all standard and work together to keep your engine running smoothly.

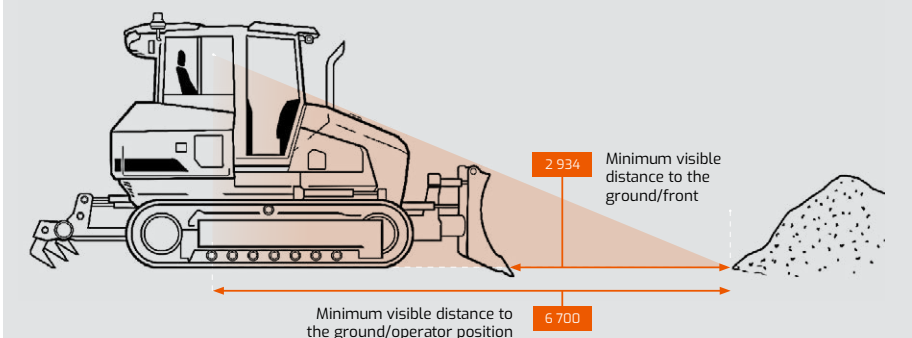


Make Rough Terrain Feel Like Home

Develon's dozers make long workdays more manageable with their spacious, comfortable cab.

- Develon dozers are designed to meet the needs of operators of every skill level. Electrohydraulic controls are fitted as standard and the ergonomically designed joystick offers low-effort control to reduce operator fatigue.
- Featuring an intuitive 8-inch touchscreen, a rearview camera, and dependable wipers, they have everything you need for smooth, safe operations.
- With adjustable air-suspended seats and reduced vibration on rough terrain, you'll stay comfortable and perform at your best.

Enjoy an excellent view of everything around you





Easy Upkeep, Maximum Uptime

Intake System

A high-efficiency, integrated pre-cleaner improves filter life. The standard in-line pre-cleaner is integrated with the air cleaner and the whole assembly is compact enough to fit inside the small engine compartment. Self-cleaning and maintenance-free, the system expels all types of mixed debris, including mud, snow, rain, leaves, sawdust, and chaff.

Hydraulically Controlled Cooling System

The hydraulic system includes reversible fans as a standard feature. Operators can set the fans to reverse automatically at a predetermined time interval. The cooling system is located in the rear of the machine instead of the front. This results in a more compact front engine compartment and better visibility over the blade.

Fuel System

An easily accessible, filter-type, high-performance water separator effectively captures moisture in the fuel, reducing impurities and helping to eliminate contamination. Standard pre-filters and dual main filters achieve a high degree of purity, minimizing fuel system failures.

Easy Maintenance

When maintenance is needed, the dozer's cabin tilts up to provide convenient access. There's no need to disassemble the cab to reach critical components. Regular inspection points are easily accessible at ground level.

Make a Hard Job Easily Done

Dozing Assist Control

Our dozer takes the hassle out of hard jobs with its standard 2D Dozing Assist. Simply set it, and the system keeps your blade perfectly aligned for precise grading—no need for GPS or lasers. It streamlines your workflow, saves on materials, and cuts down on rework.

- Values in green represent real-time blade roll or tilt, in automatic mode, to match target slopes.
- The values 3% and 1% represent the target slopes. These values can be adjusted by the operator using the joysticks.
- The DAC indicator lights on when Dozing Assist Control is activated.

Seamless Upgrade to 3D

- When you're ready to push further, add the 3D assistance kit and the system syncs to unlock full 3D performance.
- Compatible with Leica, Trimble, and Topcon—leaders in 3D assist systems—so you get top-tier accuracy and everyday reliability with every Develon dozer.

All in the Palm of Your Hand

Develon dozers are designed to meet the needs of operators of every skill level. Electrohydraulic controls are fitted as standard, making Develon machines easier to work with even for inexperienced operators. The ergonomically designed joystick offers low-effort control to reduce operator fatigue.

Premium features come as standard

The user-friendly, multilingual Smart Touch display, a standard feature, shows all important settings and information on the one screen. This easy-to-read touch screen lets the operator monitor critical dozer functions and control machine settings, the rearview camera, heating and cooling, radio, Bluetooth wireless technology and more besides.



My Develon > Management on the Jobsite
> Work Efficiency Management > Preventive
Management > Proactive Service



Monitor Your Equipment From Anywhere

To compete and succeed, your equipment must maximize jobsite productivity and profitability. Develon machines do both. To ensure a high return on investment, we include more premium features as standard on every model—features that other manufacturers often offer only as costly upgrades. By making them standard, Develon gives you a competitive edge, helping operators work more efficiently and enhancing safety during long days in the field.

> **Telematics Terminal**
A terminal device is installed and connected to a machine to capture machine data.

> **Telecommunication**
Develon offers dual-mode communication

> **My Develon**
Stay informed with My Develon—the digital platform that consolidates all equipment information and digital services in one place for quick and easy access. (mobile and satellite) for maximum coverage.

Operation Hours	Total operating hours and hours by mode
Fuel Efficiency [*]	Fuel levels and consumption
Reports & Location	Operation report and utilization, GPS, and geofencing
Warnings & Alerts	Detect machine warnings, antenna disconnections, and geo/time fence breaches
Filter & Oil Management	Preventive maintenance through scheduled part replacements

^{*}Functions may not be applied to all models. Please contact your sales representative for more information on this feature.



Attachments

Dozer attachments bring added versatility to the job and are built to Develon machine specifications for superior reliability and performance.

Parallel 3-Shank ripper attachment



The Develon dozer comes equipped with piping for the easy integration of an optional parallel 3-shank ripper attachment. The ripper attachment features a parallel linkage that helps maintain a constant angle to the ground regardless of height. This attachment helps quickly break up hard, rugged materials before grading.

Towing draw bar attachment



Attach a towing draw bar to your dozer for easy towing of other equipment around the job site.

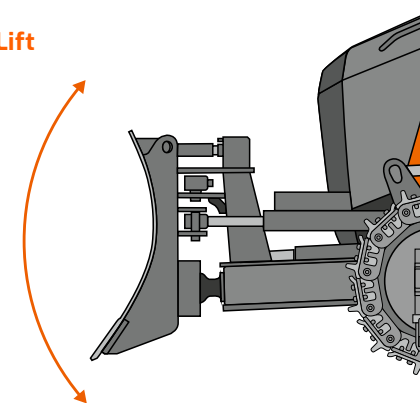
Two blade options



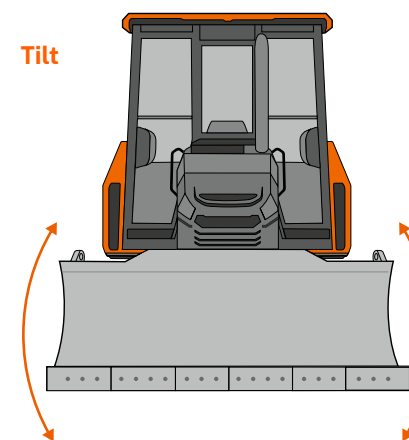
Choose from a standard (XL) blade or a low-ground pressure (LGP) configuration. See model spec sheets for blade capacity details.

Blade Tilt

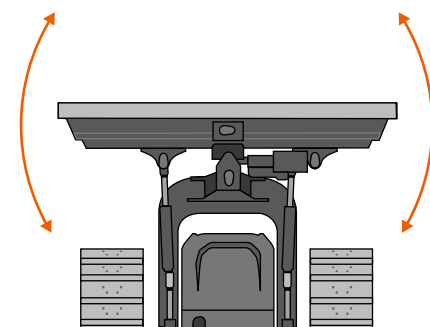
Lift



Tilt



Angle



Technical Specifications

DD100



Engine	
Make	DEVELON
Model	G2 DM03-LED00
Number of cylinders	4
Rated power, gross (hp per SAE J1995)	122.0 hp (91.0 kW) @ 2 200 rpm
Rated power, net (hp per SAE J1349)	115.3 hp (86.0 kW) @ 2 200 rpm
Max. torque, net (SAE J1995)	530.0 Nm @ 1 400 rpm
Displacement	3 409 cc
Bore and stroke	98 × 113 mm
Starter	24 V, 6.7 hp (5.0 kW)
Battery	24 V, 12V × 2, 100 AH
Alternator	24 V, 100 A
Air cleaner	Double element

Hydraulics	
Main pump type: variable displacement axial piston pump	45 cc/rev
Max. flow rate	103.5 l/min
Pump cut-off pressure	265 bar
Fan pump	27.375 cc/rev
Max. flow rate	62.9 l/min
Relief valve pressure	205 bar
Max. traction force (drawbar pull)	157 kN (16.0 ton.f)

Noise Level	
Guaranteed sound power level	106 dB(A) (2 000/14/EC)
Measured sound power level	105 dB(A) (2 000/14/EC)
Operator noise	76 dB(A) (ISO 6396)

Travel System	
HST pump axial piston	2 x 67.6 cc/rev
Max. flow rate	2 x 149 l/min
HST motor swash plate, axial piston	2 x 107 cc/rev
Max. Flow rate	2 x 288 l/min
Reduction gear type	2-Stage Planetary Gear
Reduction gear ratio	46.12
Max. output torque	62.7 / 34.7 kN.m (6 398 / 3 543 kgf.m)
Travelling speed	9 km/h
Max. traction force	16 ton

Standard & Optional Equipment

Standard Base Package

Engine	
Emissions compliant with Stage V	■
Diesel particular filter (DPF)	■
Diesel oxidation catalyst (DOC)	■
Selective catalytic reduction (SCR)	■

Hydraulics	
Variable axial piston main pump	■
Full electric hydraulics	■
Hydraulic transmission	■

Electrical	
Alternator — 24 V, 100 A	■
Additional LED lighting	■
Rotating beacon	■
Hour meter	■
Laptop service port	■
Self-diagnostics system	■

Undercarriage	
Idler trap strings	■
Segmented sprocket	■
Double- and single-sided rollers	■
Rigid frame	■
GP guard	■
Full track guard	●
Adjustable/replaceable idler guide plate	■
Serrated tracks	■
Sealed and lubricated track (SALT)	■
Shoes, steel grouser	■

Cabin	
Steel, all-weather & sound suppressed	■
ROPS/TOPS (ISO 12117-2:2008)	■
Front window and side window with wiper/washer	■
Rearview camera	■
8" Smart Touch display	■
Rear window defrost in-glass	■
Tinted safety glass	■
Lockable doors	■
Seat – Air-suspension – 2" (51 mm) seat belt – Adjustable height & recline	■
Adjustable armrests	■
Air conditioner with heater	■
Mirrors	■
AM/FM stereo & Bluetooth®	■
Speakers (2)	■
Power socket, 12 V	■
Interior light	■
Storage for operator's manuals	■

Controls	
Blade shake	■
Blade float	■
2D grade control system	■
ECO mode	■
Blade control lever	■
Engine speed control dial	■
Switches, console-mounted – Starter switch (key) – Heater/AC control panel – Boom swing switch – Rotating beacon (if equipped) – 12 V power socket & USB charger	■
Keypad buttons – Travel/swing alarm – Light – Work lights – Wiper & washer – Auto idle	■
Emergency stop switch	■

Display Monitor & Warnings	
Buzzer – Engine oil pressure – Coolant temperature	■
Touch screen display monitor – Digital clock – Menu select button – Back button – Fuel gauge – Engine coolant temperature – Hydraulic oil temperature – Mode – Tachometer – Operating mode/flow setting selector	■
Indicator lights – Air filter restriction indicator – Engine check warning light – Fuel warning – Auto idle indicator – Engine oil pressure light with audible alarm – Preheat (cold start assist) indicator	■
Travel alarm	■

Others	
Centralized lubrication	■
Parallel ripper	●
Cab-raise	■
Reversing fan	■
Reversible cutting edge	■
Forestry guard	●
Dozer blade	■
Drawbar	●
Manuals – Operation – AEM safety manual	■
My Develon (telematics)	■

Dimensions

Classification	Unit		Dimensions	XL		LGP
Height	H1	mm	Machine height from tip of grouser (Cab)	2 900		
	H2	mm	Blade height	1 085		
	H3	mm	Blade lift height	840.5		
	H4	mm	Digging depth	466		
	H5	mm	Maximum tilt height (Blade)	383.5		455.5
	H7	mm	Ground clearance (W/O grouser)	200		
	H8	mm	Ripper height	883		
	H9	mm	Ripper digging depth	284		
	H10	mm	Maximum ground clearance under tip – Ripper	544		
	H11	mm	Grouser height	50		
Lenght	L1	mm	Overall length with blade & ripper	5 600		
	L1'	mm	Overall length with blade only	4 739		
	L4	mm	Track length	3 220		
Width	W1	mm	Blade width	2 770		3 280
	W2	mm	Overall width at max. angle	2 625		2 950
	W3	mm	Blade width at max. angle	2 410		2 863
	W4	mm	Machine width – without blade	2 400		2 590
	W5	mm	Track gauge	1 890		
	W6	mm	Shoe width	510		700
	W8	mm	Overall ripper width	1 580		
	W9	mm	Ripping width	1 486		
	W10	mm	Distance between shank (ripper)	743		
Angle	A1	deg	Maximum blade angle	25		
	A2	deg	Maximum tilt angle	8		
	A3	deg	Blade cutting edge angle (adjustable)	54°-59		

Rear Attachments

Item	Unit	Figure	Remarks
Body W/O front	kg	9 180	with shoe
Shoe	kg	2 140 / 1 800	LGP / XL
C-frame assy	kg	700	with cover
– C-frame	kg	431	with bush
– Lifting cyl. (2ea)	kg	73	with bush
– Angle cyl. (2ea)	kg	63	with bush
– Tilt cyl. (1ea)	kg	32	with bush
Blade assy XL	kg	766	
Blade assy LGP	kg	887	
Ripper assy	kg	733	

Ground Contact Area

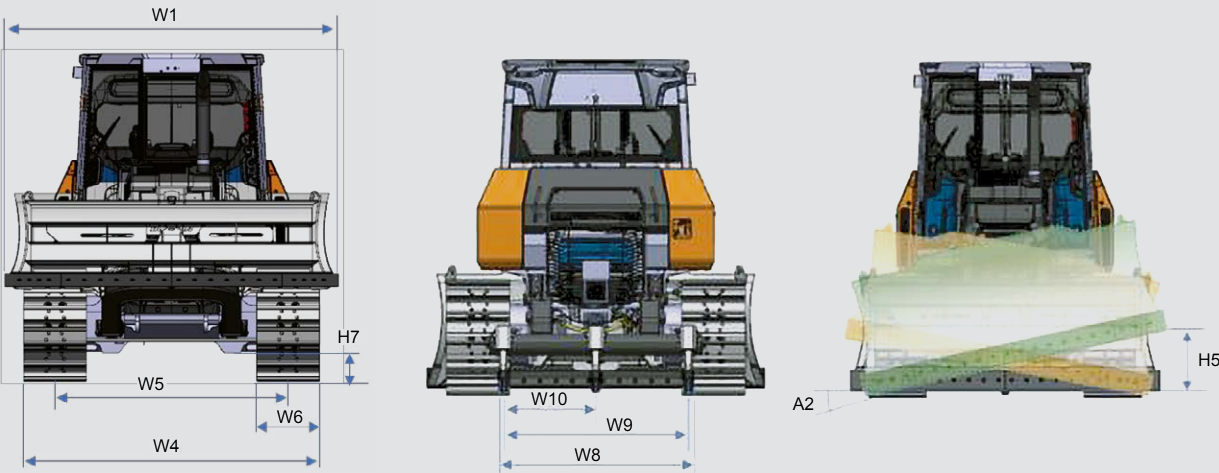
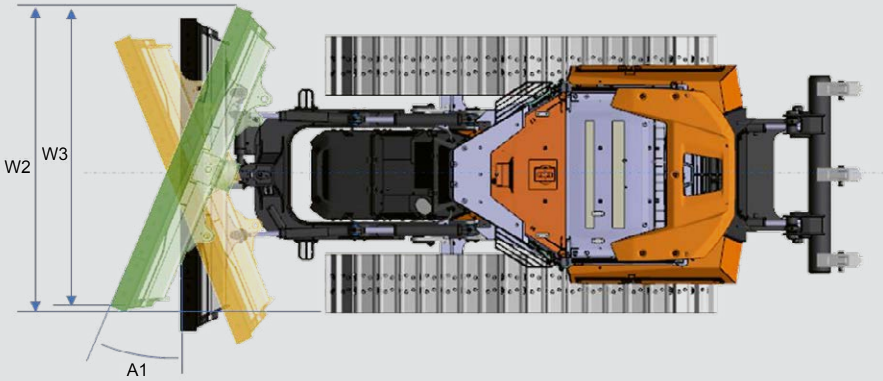
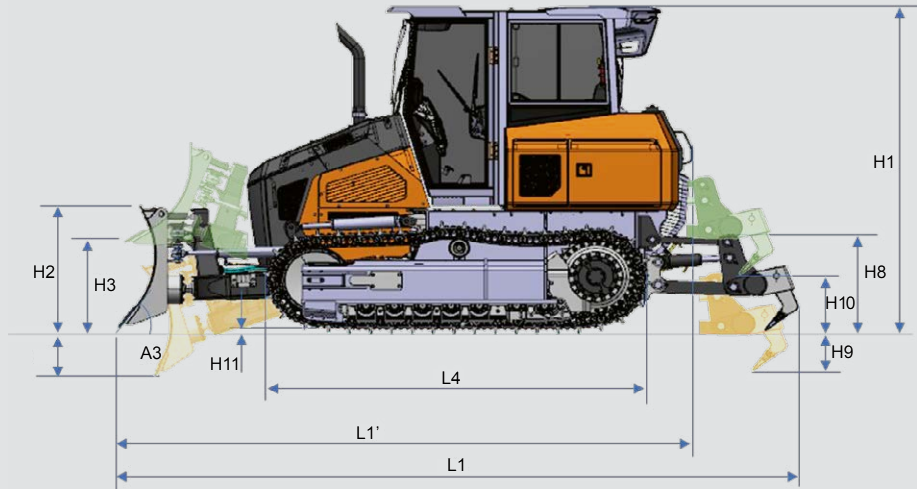
DD100 with ripper	Ground contact area (cm²)	Ground pressure (kg/cm²)
XL	26 523	0.39
LGP	36 405	0.32

Front Attachments

	Width (mm)	Capacity (m³)	Weight (kg)
Blade XL	2 710	2.22	765
Blade LGP	3 220	2.58	885

Rear Attachments

	Width (mm)	Weight (kg)	Type
Ripper	1 710	725	Parellelogram
Towing drawbar			



Technical specifications

DD130



Engine

Engine system	PERKINS
Model	1204J
Number of cylinders	4
Rated power, gross (hp per SAE J1995)	117.0 kW @ 2 200 rpm
Rated power, net (hp per SAE J1995)	156.9 HP @ 2 200 rpm
Maximum torque	710 Nm @ 1 400 rpm
Variable geometry twin turbocharger (2-Stage)	
Displacement	4 400 cc
Bore and stroke	105 × 127 mm
Starter	24 V, 10.5 hp (7.8 kW)
Battery system voltage	24 V, 12V × 2, 100 AH
Alternator voltage	24 V, 100 amp
Air cleaner	Dual element

Hydraulics

Main pump Type: variable displacement axial piston pump	60 cc/rev
Max. flow rate	132 l/min
Pump cut-off pressure	265 bar
Fan pump	30.34 cc/rev
Max. flow rate	66.75 l/min
Relief valve pressure	205 bar
Max. traction force (drawbar pull)	215.7 kN (22.0 ton.f)

Noise Level

Guaranteed sound power level	106 dB(A) (2 000/14/EC)
Measured sound power level	105 dB(A) (2 000/14/EC)
Operator noise	76 dB(A) (ISO 6396)

Travel System

HST pump axial piston	2 × 71 cc/rev
Max. flow rate	2 × 156.2 l/min
HST motor swash plate, axial piston	2 × 160 cc/rev
Max. flow rate	2 × 312 l/min
Reduction gear type	2-Stage Planetary Gear
Reduction gear ratio	50.6
Max. output torque	62.7 / 34.7 kN.m (6 398 / 3 543 kgf.m)
Travelling speed	9 km/h
Max. traction force	22 ton

Standard & Optional Equipment

Standard Base Package

Engine

Emissions compliant with Stage V	■
Diesel particular filter (DPF)	■
Diesel oxidation catalyst (DOC)	■
Selective catalytic reduction (SCR)	■

Hydraulics

Variable axial piston main pump	■
Full electric hydraulics	■
Hydraulic transmission	■

Electrical

Alternator – 24 V, 100 A	■
Additional LED lighting	■
Rotating beacon	■
Hour meter	■
Laptop service port	■
Self-diagnostics system	■

Undercarriage

Idler trap strings	■
Segmented sprocket	■
Double- and single-sided rollers	■
Oscillated frame	■
GP guard	■
Full track guard	●
Adjustable/replaceable idler guide plate	■
Serrated tracks	■
Sealed and lubricated track (SALT)	■
Shoes, steel grouser	■

Cabin

Steel, all-weather & sound suppressed	■
ROPS/TOPS (ISO 12117-2:2008)	■
Front window and side window with wiper/washer	■
Rearview camera	■
8" Smart Touch display	■
Rear window defrost in-glass	■
Tinted safety glass	■
Lockable doors	■
Seat – Air-suspension – 2" (51 mm) seat belt – Adjustable height & recline	■
Adjustable armrests	■
Air conditioner with heater	■
Mirrors	■
AM/FM stereo & Bluetooth®	■
Speakers (2)	■
Power socket, 12 V	■
Interior light	■
Storage for operator's manuals	■

Controls

Blade shake	■
Blade float	■
2D grade control system	■
ECO mode	■
Blade control lever	■
Engine speed control dial	■
Switches, console-mounted – Starter switch (key) – Heater/AC control panel – Boom swing switch – Rotating beacon (if equipped) – 12 V power socket & USB charger	■
Keypad buttons – Travel/swing alarm – Light – Work lights – Wiper & washer – Auto idle	■
Emergency stop switch	■

Display Monitor & Warnings

Buzzer – Engine oil pressure – Coolant temperature	■
Touch screen display monitor – Digital clock – Menu select button – Back button – Fuel gauge – Engine coolant temperature – Hydraulic oil temperature – Mode – Tachometer – Operating mode/flow setting selector	■
Indicator lights – Air filter restriction indicator – Engine check warning light – Fuel warning – Auto idle indicator – Engine oil pressure light with audible alarm – Preheat (cold start assist) indicator	■
Travel alarm	■

Others

Centralized lubrication	■
Parallel ripper	●
Cab-raise	■
Reversing fan	■
Reversible cutting edge	■
Forestry guard	●
Dozer blade	■
Drawbar	●
Manuals – Operation – AEM safety manual	■
My Develon (telematics)	■

■ Standard ● Optional

Dimensions

Classification		Unit	Dimensions	XL	LGP1	LGP2
Height	H1	mm	Machine height from tip of grouser (cab)	3 130	3 130	3 130
	H1'	mm	Machine height from tip of grouser (with guard)	3 180	3 180	3 180
	H2	mm	Blade height	1 115	1 115	1 115
	H3	mm	Blade lift height	1 110	1 110	1 110
	H4	mm	Digging depth	405	405	405
	H5	mm	Maximum tilt height (blade)	435	510	470
	H7	mm	Ground clearance (W/O grouser)	355	355	355
	H8	mm	Ripper height	1 110	1 110	1 110
	H9	mm	Ripper digging depth	280	280	280
	H10	mm	Maximum ground clearance under tip – ripper	585	585	585
	H11	mm	Grouser height	57	57	57
Lenght	L1	mm	Overall length with blade & ripper	6 030	6 030	6 030
	L1'	mm	Overall lenght with blade only	5 035	5 035	5 035
	L4	mm	Track lenght	3 690	3 690	3 690
Width	W1	mm	Overall width (blade width)	3 105	3 655	3 345
	W2	mm	Overall width at max. angle	2 870	3 370	3 090
	W3	mm	Blade width at max. angle	2 870	3 370	3 090
	W4	mm	Machine width – without blade	2 330	2 760	2 710
	W5	mm	Track gauge	1 770	2 000	2 000
	W6	mm	Shoe width	560	760	710
	W8	mm	Overall ripper width	1 860	1 860	1 860
	W9	mm	Ripping width	1 740	1 740	1 740
	W10	mm	Distance between shank (ripper)	870	870	870
	W11	mm	Distance between shank (ripper)	870	870	870
Angle	A1	deg	Maximum blade angle	25	25	25
	A2	deg	Maximum tilt angle	8	8	8
	A3	deg	Blade cutting edge angle (adjustable)	52°58	52°58	52°58

Rear Attachments

Item	Unit	Figure	Remarks
Body W/O front	kg	12 280	with shoe
Shoe	kg	2 970 / 2 850 / 2 500	LGP1 / LGP2 / XL
C-frame assy	kg	956	with cover
– C-Frame	kg	700	with bush
– Lifting cyl. (2ea)	kg	92	with bush
– Angle cyl. (2ea)	kg	89	with bush
– Tilt cyl. (1ea)	kg	54	with bush
Blade assy XL	kg	933	
Blade assy LGP1	kg	1 072	
Blade assy LGP2	kg	992	
Ripper assy	kg	865	

Ground Contact Area

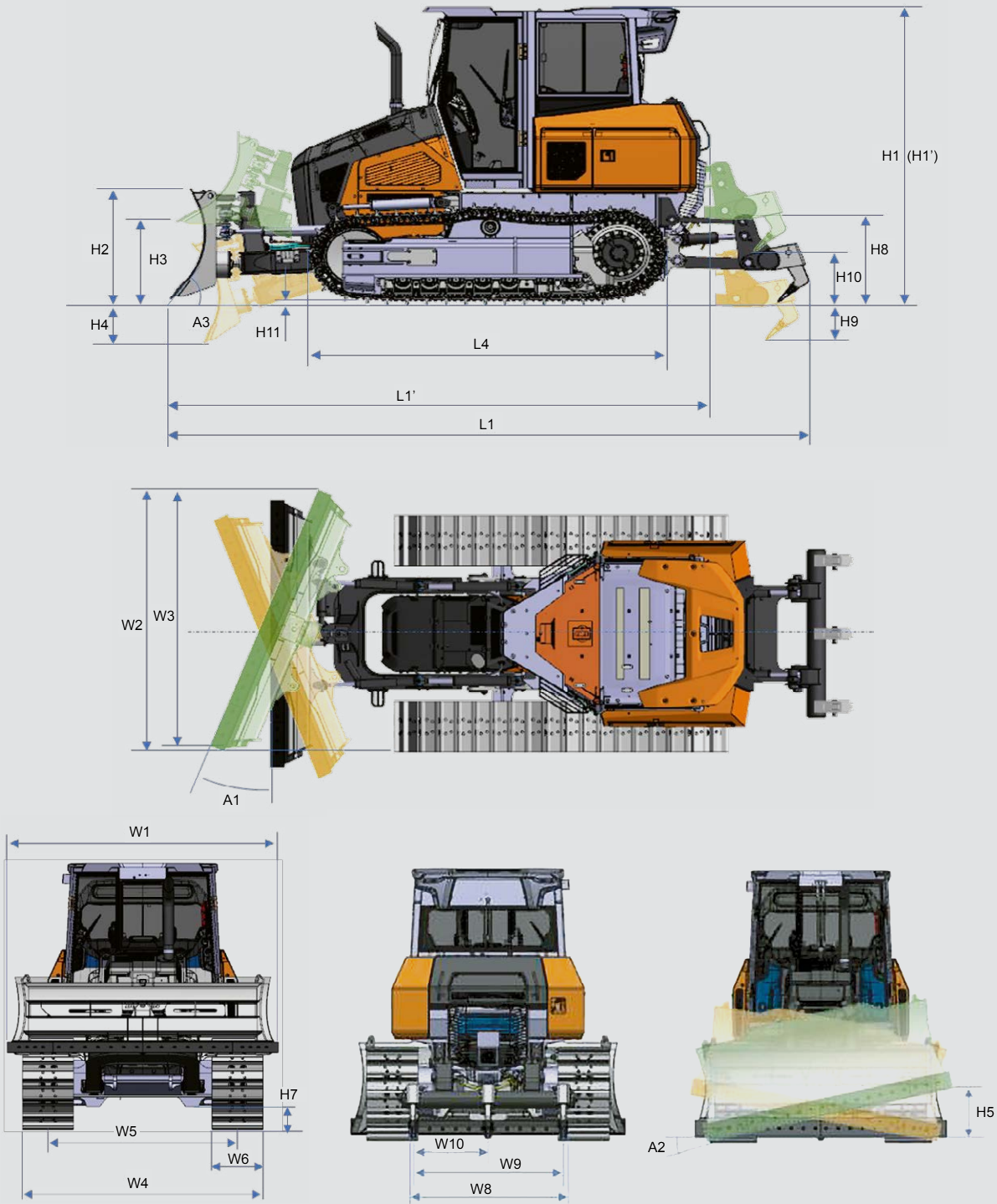
DD130 with ripper	Ground contact area (cm²)	Ground pressure (kg/cm²)
XL	33 818	0.42
LGP (shoes 710 mm)	42 875	0.35
LGP (shoes 760 mm)	45 895	0.33

Front Attachments

	Width (mm)	Capacity (m³)	Weight (kg)
Blade XL	3 103	3.54	929
Blade LGP1	3 653	4.18	1 071
Blade LGP2 (EU)	3 343	3.75	992

Rear Attachments

	Width (mm)	Weight (kg)	Type
Ripper	1 964	866	Parellelogram
Towing drawbar			





Develon Warranty

Your Key to Equipment Protection and Peace of Mind

Keep your heavy construction equipment protected with Develon. Our comprehensive warranties and premium protection plans give you peace of mind, ensuring your investment stays safe and valuable for the road ahead.

Tailored Warranty Plans

Choose from a range of affordable protection plans, designed exclusively for Develon customers through our authorized dealers. These plans transform your machine's price into a strategic investment, not just an expense.

Develon Premium Protection

Opt for Develon Premium to experience unmatched security, reliability, and overall value. This top-tier plan shields your equipment from unexpected costs and minimizes downtime, letting you focus on what matters—getting the job done.

Act Now!

Get in touch with a Develon authorized dealer today to protect your equipment investment. With an easy process and lasting benefits, Develon helps keep your heavy construction equipment in top condition.

**Choose Develon Premium Warranty:
Play it Safe and Secure Your
Investment.**

Powered by Innovation

DEVELON

Space for dealer's stamp



HD Hyundai Infracore Europe s.r.o.
IBC – Pobrezni 620/3,
18600 Praha 8 – Karlin, Czechia

©2026 HD Hyundai Infracore. All rights reserved.

D700001

Certain specification(s) are based on engineering calculations and are not actual measurements. Specification(s) are provided for comparison purposes only and are subject to change without notice. Specification(s) for your individual Develon equipment will vary based on normal variations in design, manufacturing, operating conditions, and other factors. Pictures of Develon units may show other than standard equipment.